



Standing back and looking forward

Understanding the 2017
election result and what it
means for 2020

2017 Election

	Valid Party Votes				Final Seats		
	Provisional ⁽¹⁾	Final	Provisional Share (%)	Final Share (%)	Electorate	List	Total
National Party	998,813	1,152,075	46	44.4	41	15	56
Labour Party	776,556	956,184	35.8	36.9	29	17	46
New Zealand First	162,988	186,706	7.5	7.2	0	9	9
Green Party	126,995	162,443	5.9	6.3	0	8	8
ACT New Zealand	10,959	13,075	0.5	0.5	1	0	1
The Opportunities Party	48,018	63,261	2.2	2.4	0	0	0
Māori Party	23,456	30,580	1.1	1.2	0	0	0
United Future	1,471	1,782	0.1	0.1	0	0	0
Other ⁽²⁾	20,546	25,790	0.9	1	0	0	0
Total Valid Party Votes	2,169,802	2,591,896	100	100			
Informal / Disallowed Votes ⁽³⁾	9,866	38,277					
Totals	2,179,668	2,630,173			71	49	120

2014 v 2017

	Final Party Vote Share (%)			Total Seats		
	2014	2017	Change (% points)	2014	2017	Change
National Party	47.0	44.4	-2.6	60	56	-4
Labour Party	25.1	36.9	11.8	32	46	14
New Zealand First	8.7	7.2	-1.5	11	9	-2
Green Party	10.7	6.3	-4.4	14	8	-6
Māori Party	1.3	1.2	-0.1	2	0	-2
ACT New Zealand	0.7	0.5	-0.2	1	1	0
United Future	0.2	0.1	-0.1	1	0	-1

PV change (%) in blocs, 2014 to 2017

National-led government

National	-2.6
Māori	-0.1
ACT	-0.2
<u>United Future</u>	<u>-0.1</u>
Total	-3.0

Labour-led government

Labour	+11.8
Green	-4.4
<u>New Zealand First</u>	<u>-1.5</u>
Total	+5.9

Seat change in blocs 2014 to 2017

National-led government

National	-4
Māori	-2
ACT	N/C
UF	-1
<hr/>	
Total	-7

Labour-led government

Labour	+14
Green	-6
NZ First	-2
<hr/>	
Total	+6

Seat exchange major parties

National-led government

National	-4
Māori	-2
ACT	N/C
UF	-1
<hr/>	
Total	-7

Labour-led government

Labour	+14
Green	-6
NZ First	-2
<hr/>	
Total	+6

Seat change within Labour-led bloc

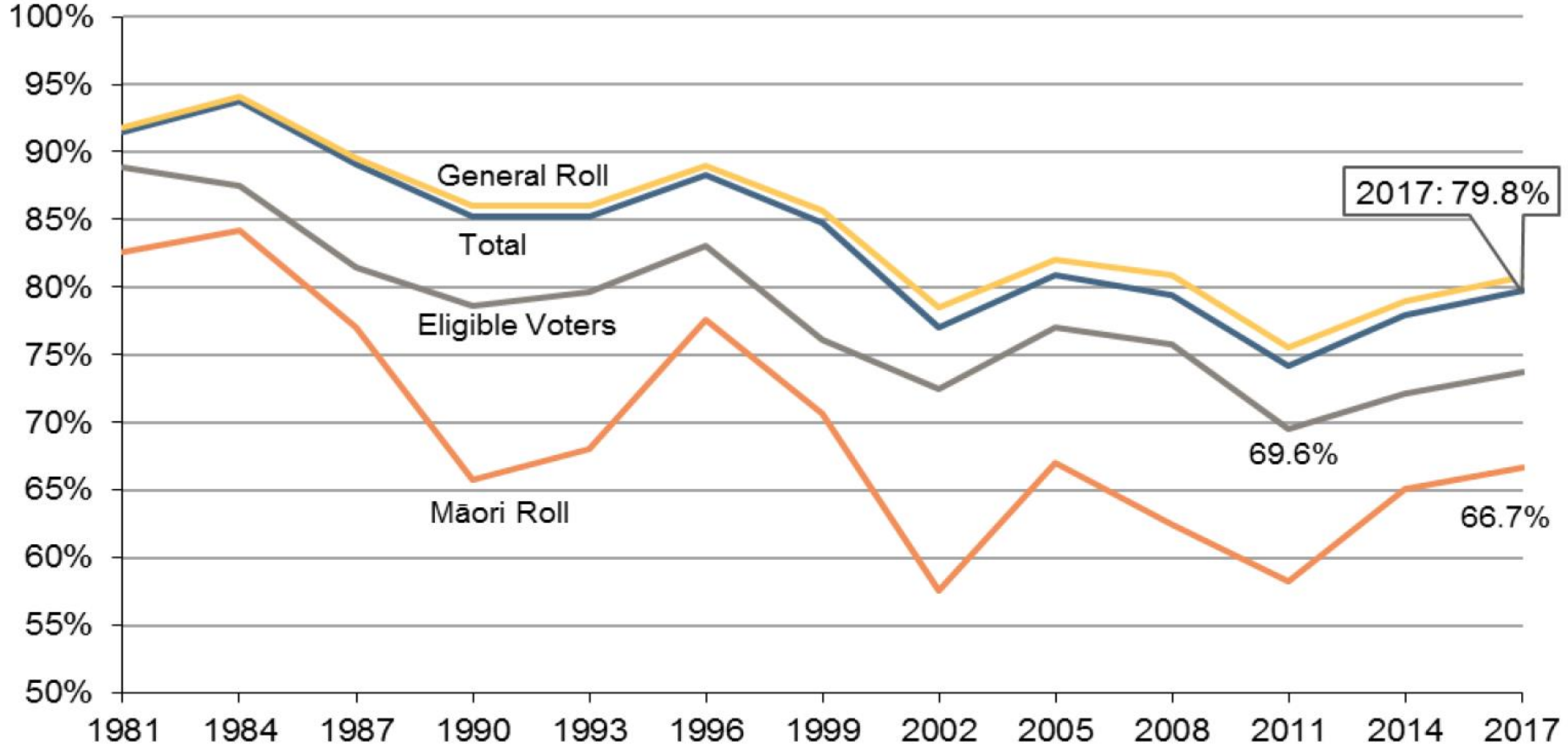
National-led government

National	-4
Māori	-2
ACT	N/C
UF	-1
<hr/>	
Total	-7

Labour-led government

Labour	+14
Green	-6
NZ First	-2
<hr/>	
Total	+6

On a higher voter turnout



Source: New Zealand Parliamentary Library

Where was
turnout
lowest?

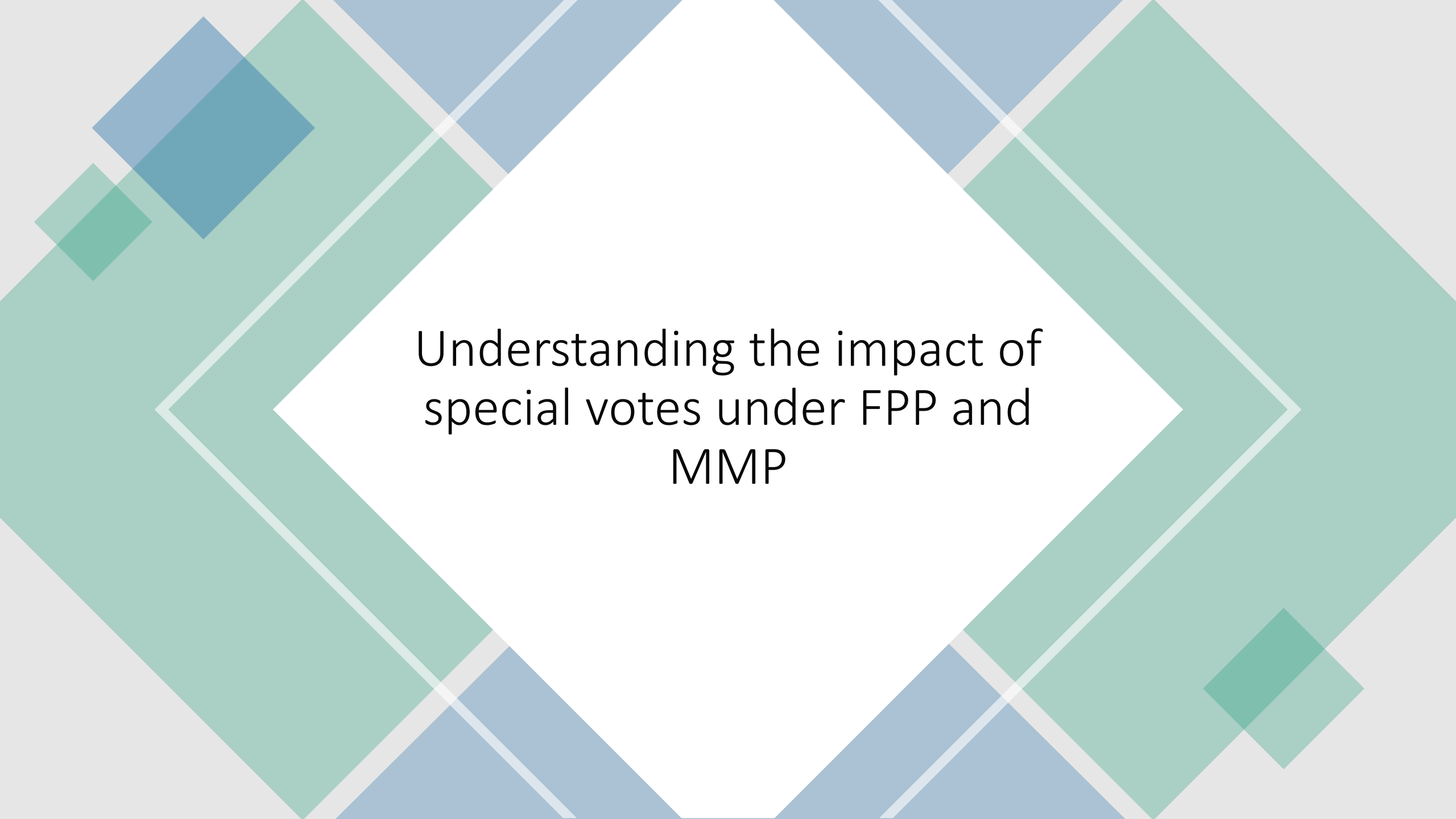
<i>Lowest General Electorates</i>	2011	2014	2017
New Lynn	74.4	76	76.8
Te Atatū	72.4	75.9	76.8
East Coast Bays	71.6	75.9	76.7
Mt Roskill	71.8	75	75.9
Upper Harbour	...	74.3	75.7
Kelston	...	74.3	75.2
Botany	67	71.9	72.6
Manurewa	67	70.2	67.5
Māngere	67.1	69.4	67.1
Manukau East	67.8	69.7	66.1

Māori Electorates	2011	2014	2017
Te Tai Tokerau	61.6	69.3	69.4
Te Tai Hauāuru	58.7	65.9	68.7
Wairiki	59.9	66.3	68.6
Te Tai Tonga	57	63.6	68.3
Ikaroa-Rāwhiti	58.8	66.3	67.4
Hauraki-Waikato	56.9	63.6	65.4
Tāmaki Makaurau	54.8	60.6	59.2
Average	58.2	65.1	66.7

Total (All Electorates)	74.2	77.9	79.8
-------------------------	------	------	------

Note the difference between provisional & final counts

	Valid Party Votes				Final Seats		
	Provisional ⁽¹⁾	Final	Provisional Share (%)	Final Share (%)	Electorate	List	Total
National Party	998,813	1,152,075	46	44.4	41	15	56
Labour Party	776,556	956,184	35.8	36.9	29	17	46
New Zealand First	162,988	186,706	7.5	7.2	0	9	9
Green Party	126,995	162,443	5.9	6.3	0	8	8
ACT New Zealand	10,959	13,075	0.5	0.5	1	0	1
The Opportunities Party	48,018	63,261	2.2	2.4	0	0	0
Māori Party	23,456	30,580	1.1	1.2	0	0	0
United Future	1,471	1,782	0.1	0.1	0	0	0
Other ⁽²⁾	20,546	25,790	0.9	1	0	0	0
Total Valid Party Votes	2,169,802	2,591,896	100	100			
Informal / Disallowed Votes ⁽³⁾	9,866	38,277					
Totals	2,179,668	2,630,173			71	49	120



Understanding the impact of
special votes under FPP and
MMP

Table 1. The numbers of valid votes and special votes cast in general elections – and the proportions of special votes – in New Zealand from 1960 to 2017.

Year	Total valid votes	Total special votes	Special votes %
1960	1,170,503	101,188	8.64
1963	1,198,045	105,490	8.81
1966	1,205,095	102,459	8.50
1969	1,340,168	130,578	9.74
1972	1,401,153	139,348	9.95
1975	1,603,733	159,988	9.98
1978	1,710,173	197,595	11.55
1981	1,801,303	202,095	11.22
1984	1,929,201	211,195	10.95
1987	1,831,777	232,589	12.70
1990	1,824,092	242,355	13.29
1993	1,922,796	197,702	10.28
1996	2,072,359	238,306	11.50
1999	2,065,494	218,109	10.56
2002	2,031,617	202,770	9.98
2005	2,275,629	230,006	10.11
2008	2,344,566	250,353	10.68
2011	2,237,464	240,351	10.74
2014	2,405,622	300,915	12.51
2017	2,591,896	417,980	16.13

Table 5. Seats gained and seats lost as a result of special votes cast in New Zealand's eight MMP general elections from 1996 to 2017.

	1996	1999	2002	2005	2008	2011	2014	2017	Total seats affected
Labour	0	-3	0	0	0	0	0	+1	4
National	0	-2	0	-1	-1	-1	-1	-2	8
Green	-	+7	+1	0	+1	+1	+1	+1	12
NZ First	0	-1	0	0	0	0	0	0	1
Alliance	0	-1	0	0	0	0	0	0	1
ACT	0	0	0	0	0	0	0	0	0
United	0	0	-1	0	0	0	0	0	1
Māori	-	-	-	0	0	0	0	0	0
Total seats affected	0	14	2	1	2	2	2	4	27

Figure 1: National's special vote differentials in general elections from 1960 to 1993

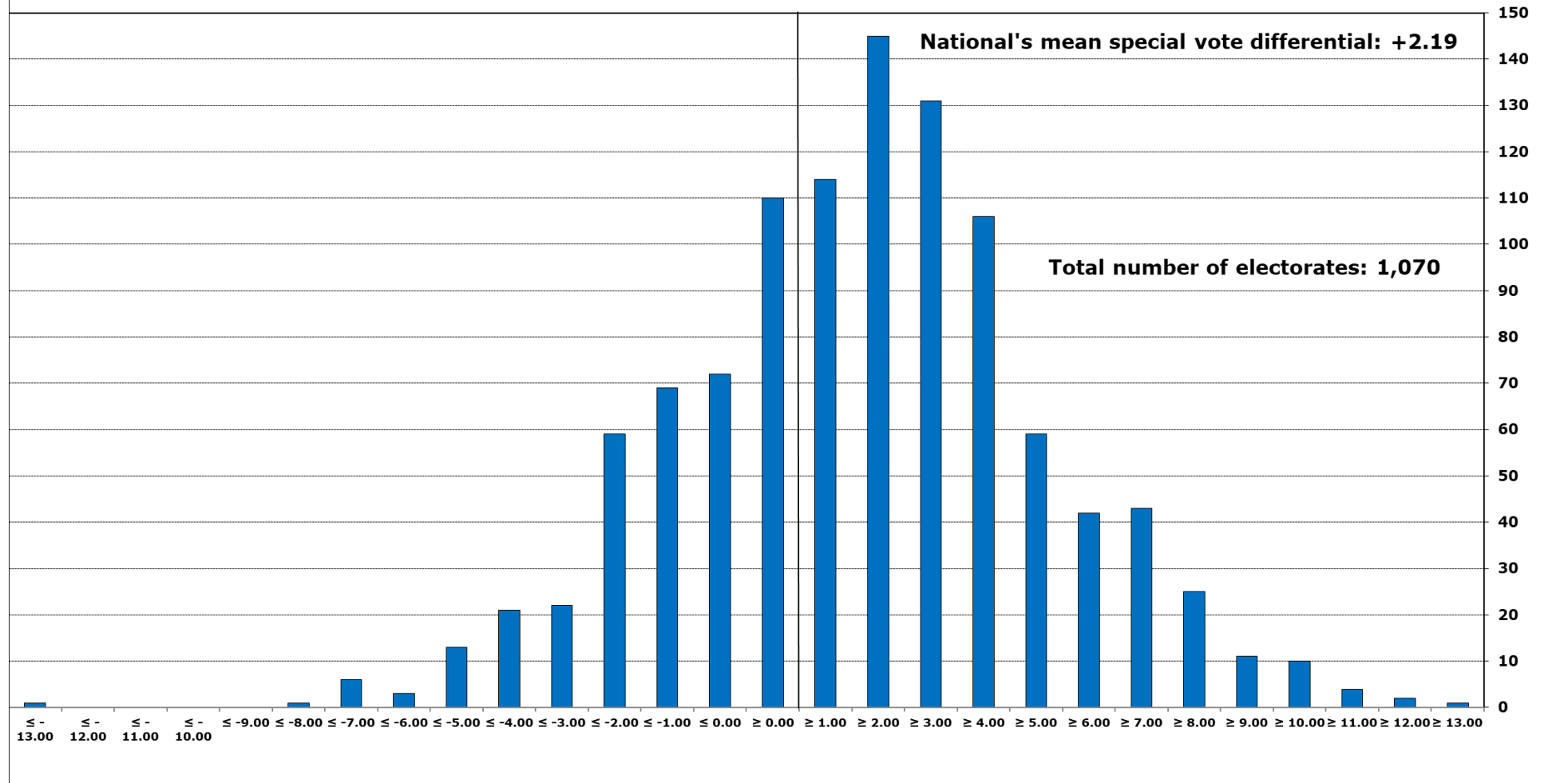
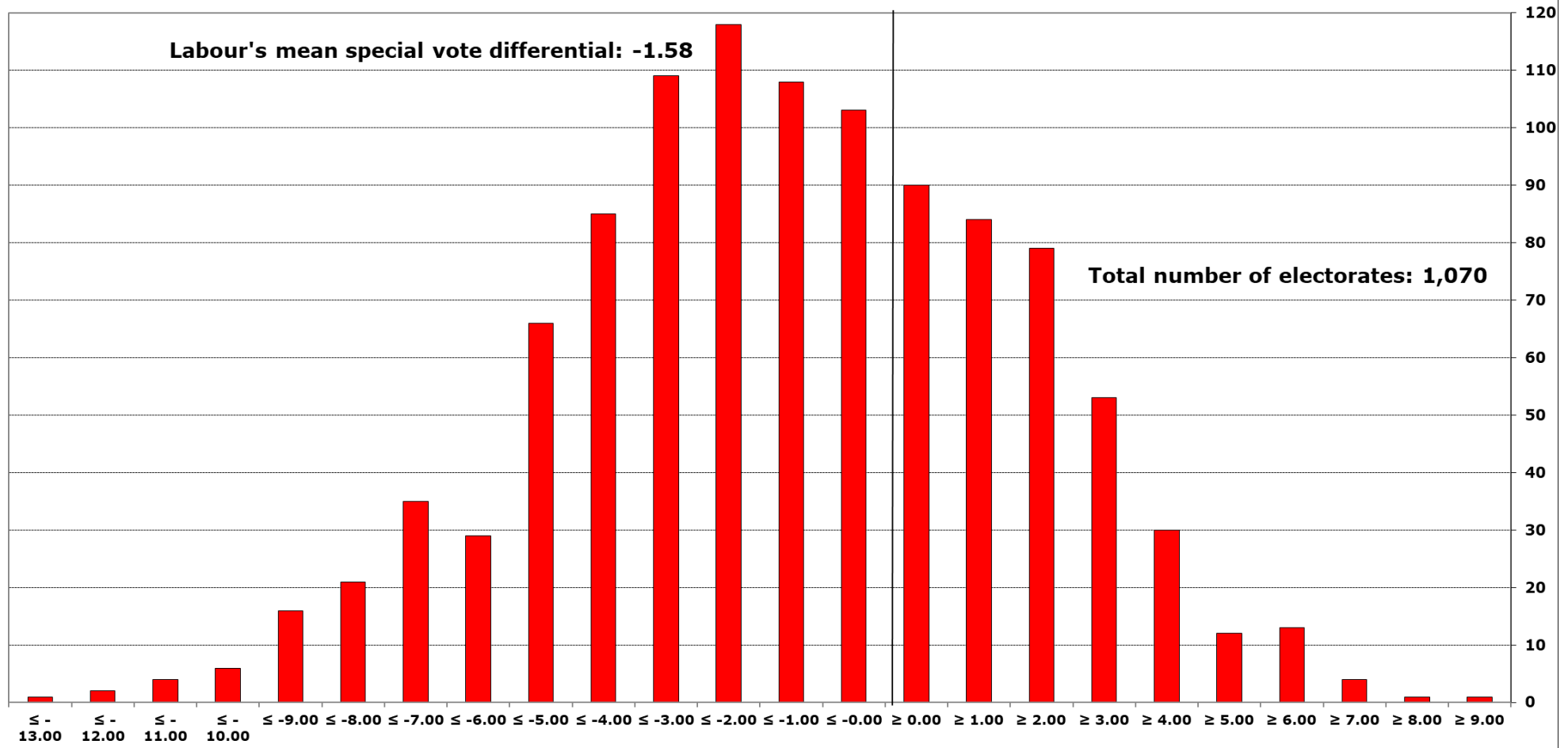
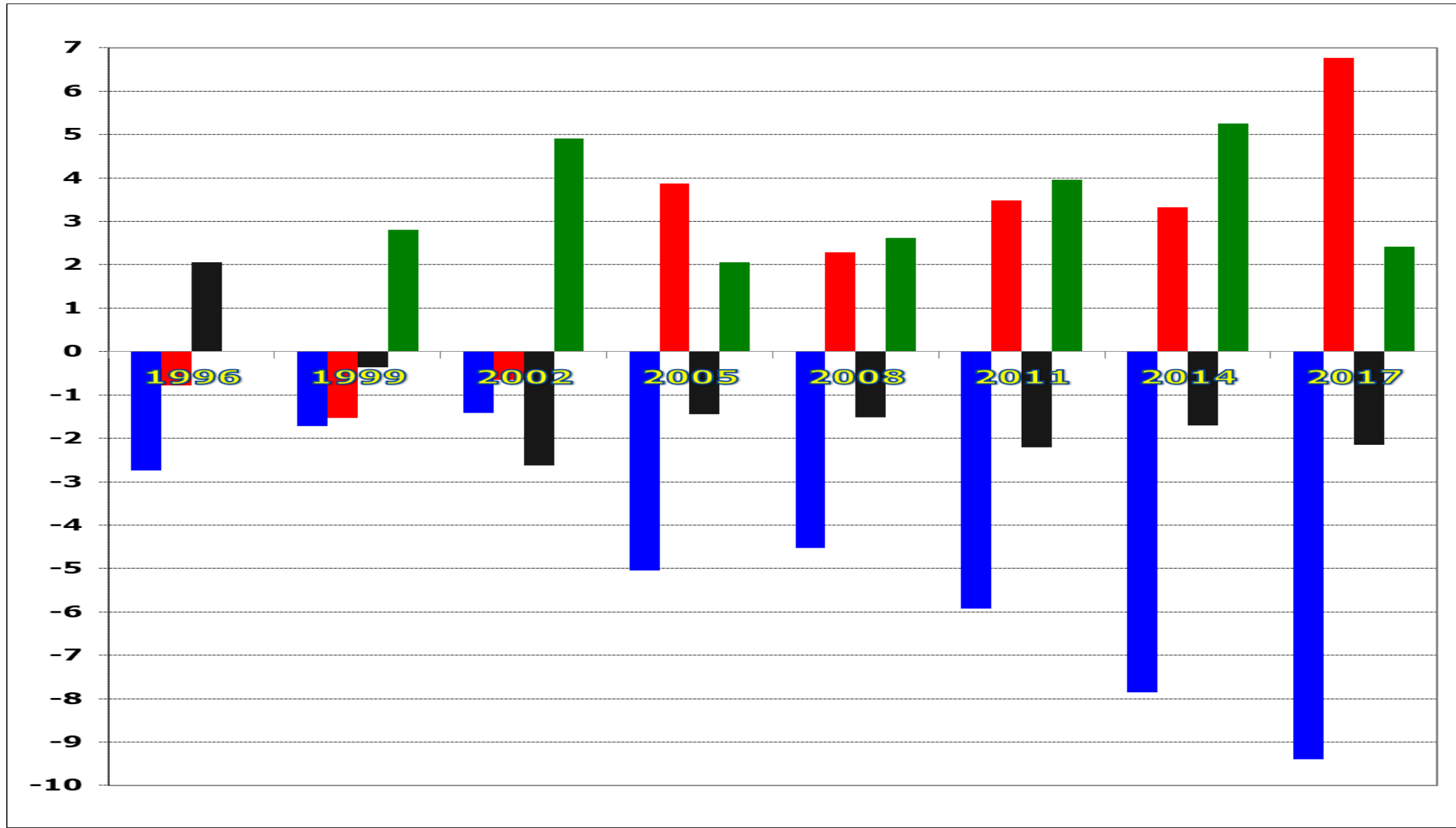
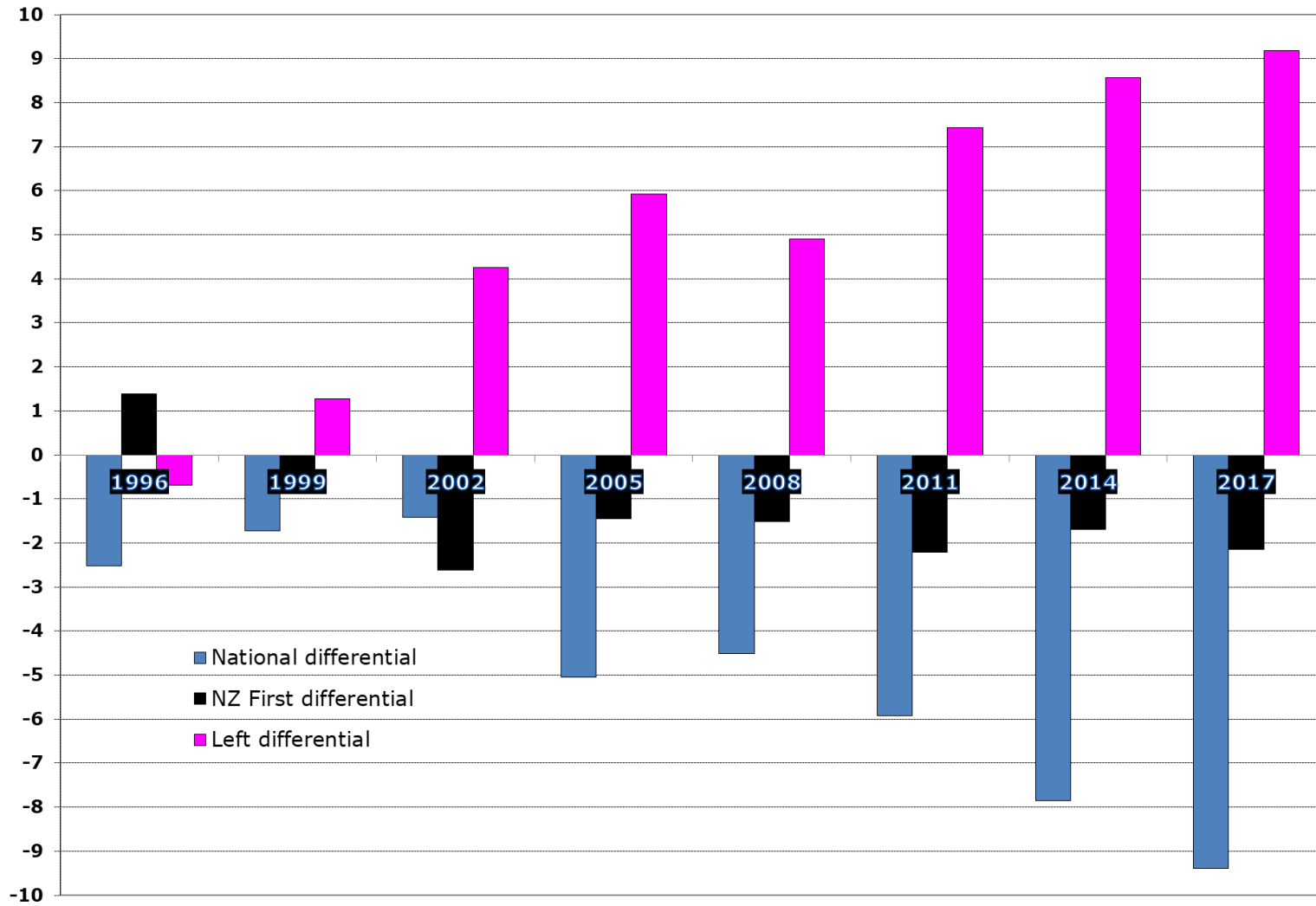


Figure 2: Labour's special vote differentials in general elections from 1960 to 1993



MMP special vote differential (%) four main parties



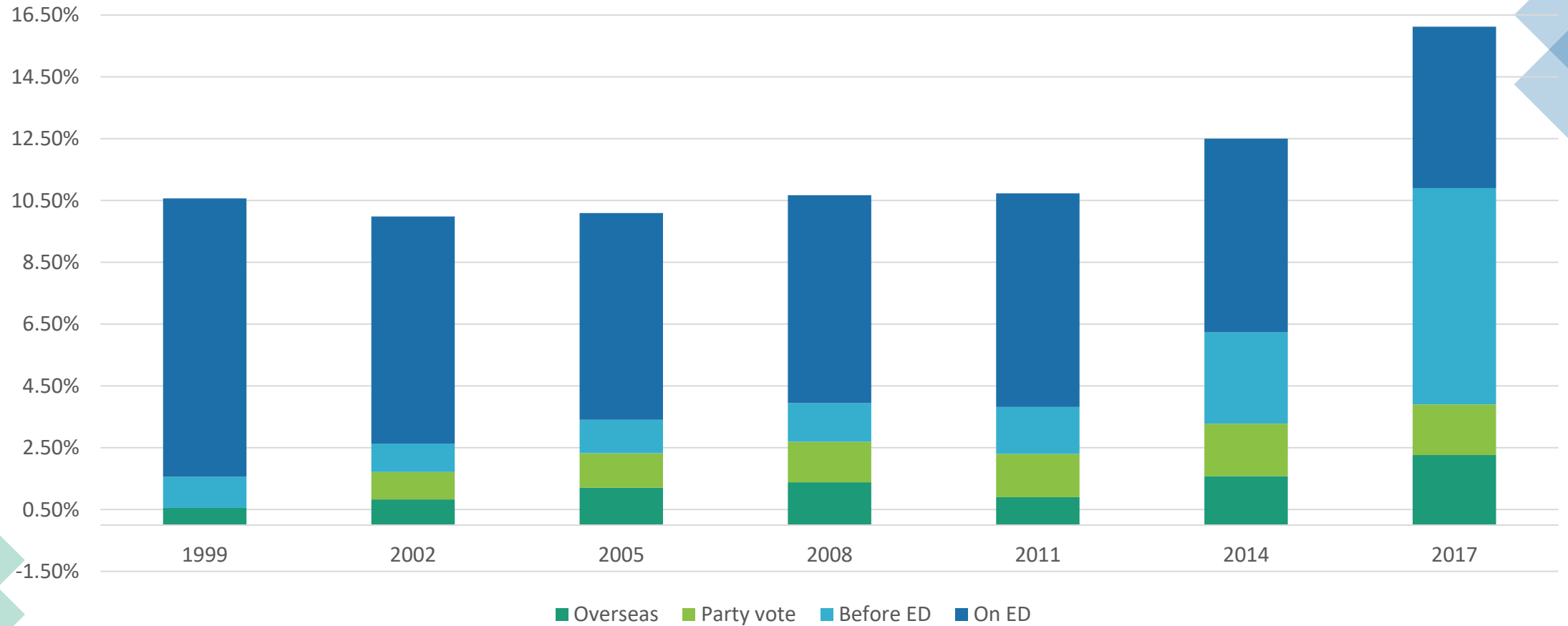


MMP special
vote differential
(%) National,
NZ First &
combined
Labour/Green

		Ordinary Votes	Overseas Specials	Party Only	Specials before ED	Specials on ED	Total Votes
1999	Greens	4.9%	5.7%		6.1%	8.0%	5.2%
	Labour	38.9%	30.7%		38.4%	37.7%	38.7%
	National	30.7%	36.1%		27.7%	28.7%	30.5%
2002	Greens	6.5%	14.3%	13.6%	8.0%	11.3%	7.0%
	Labour	41.3%	39.4%	44.6%	42.3%	40.1%	41.3%
	National	21.1%	23.3%	14.3%	21.0%	19.7%	20.9%
2005	Greens	5.1%	11.1%	5.9%	5.6%	6.9%	5.3%
	Labour	40.7%	38.3%	53.9%	41.3%	44.7%	41.1%
	National	39.6%	40.9%	22.5%	38.2%	34.8%	39.1%
2008	Greens	6.4%	13.8%	6.9%	7.3%	8.8%	6.7%
	Labour	33.7%	27.1%	46.1%	36.1%	35.9%	34.0%
	National	45.4%	51.0%	28.9%	42.2%	40.9%	44.9%
2011	Greens	10.6%	22.7%	12.5%	12.6%	14.4%	11.1%
	Labour	27.1%	21.2%	41.0%	31.1%	29.6%	27.5%
	National	48.0%	48.6%	28.6%	43.0%	43.6%	47.3%
2014	Greens	10.0%	26.5%	12.4%	14.1%	13.8%	10.7%
	Labour	24.7%	18.0%	38.0%	29.2%	27.3%	25.1%
	National	48.0%	45.4%	29.0%	39.7%	42.1%	47.0%
2017	Greens	5.9%	15.2%	6.2%	7.8%	6.6%	6.3%
	Labour	35.8%	38.2%	52.4%	43.6%	40.0%	36.9%
	National	46.0%	37.4%	26.4%	36.5%	39.5%	44.4%

Greens, Labour & National
proportion of valid votes by
type 1999-2017

Categories of special votes as % of total vote



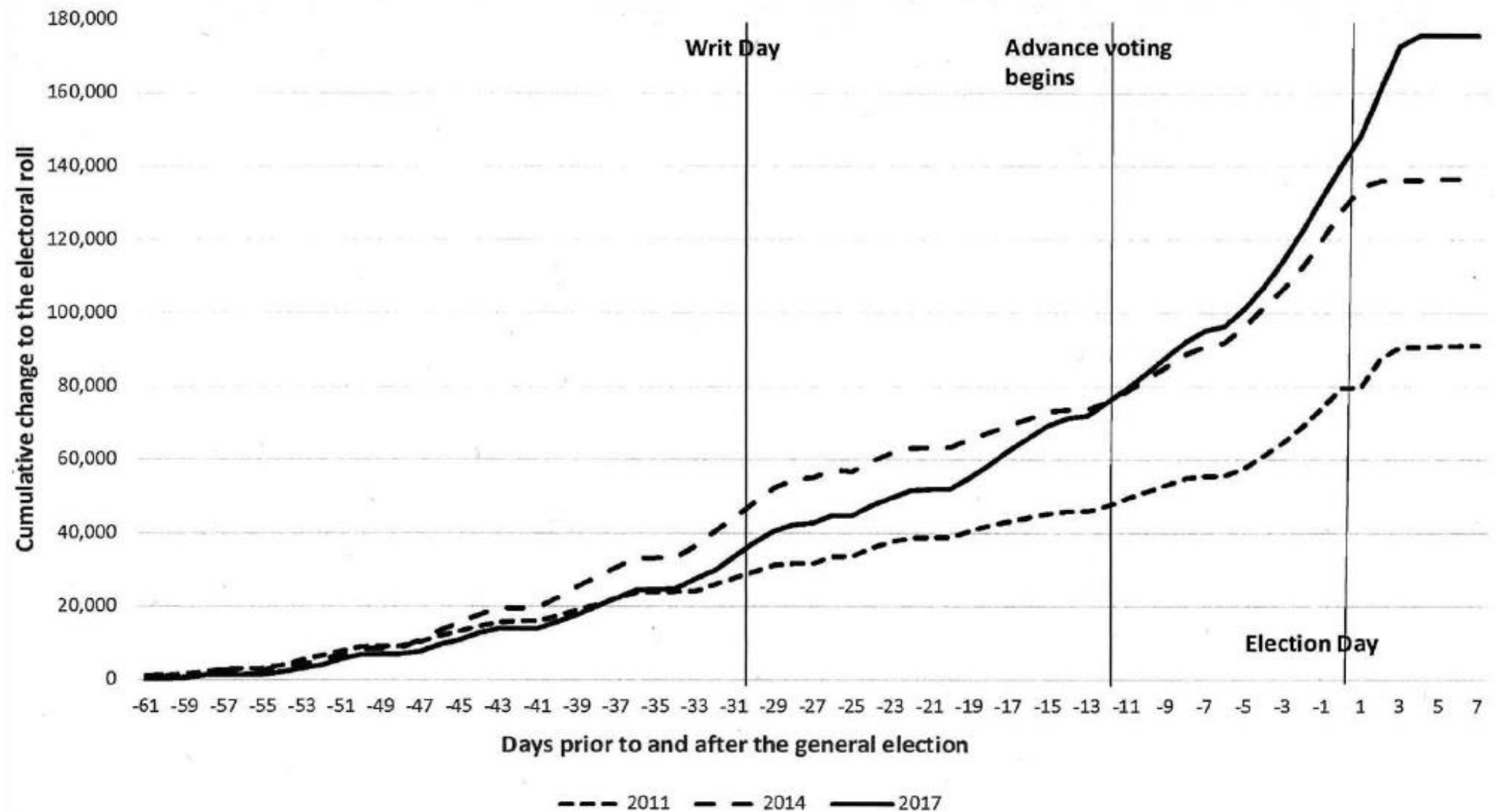


Figure 8. The growth in the electoral roll in New Zealand in the lead-up to the 2011, 2014, and 2017 general elections.

1 NEWS Colmar Brunton Poll

Party Vote

